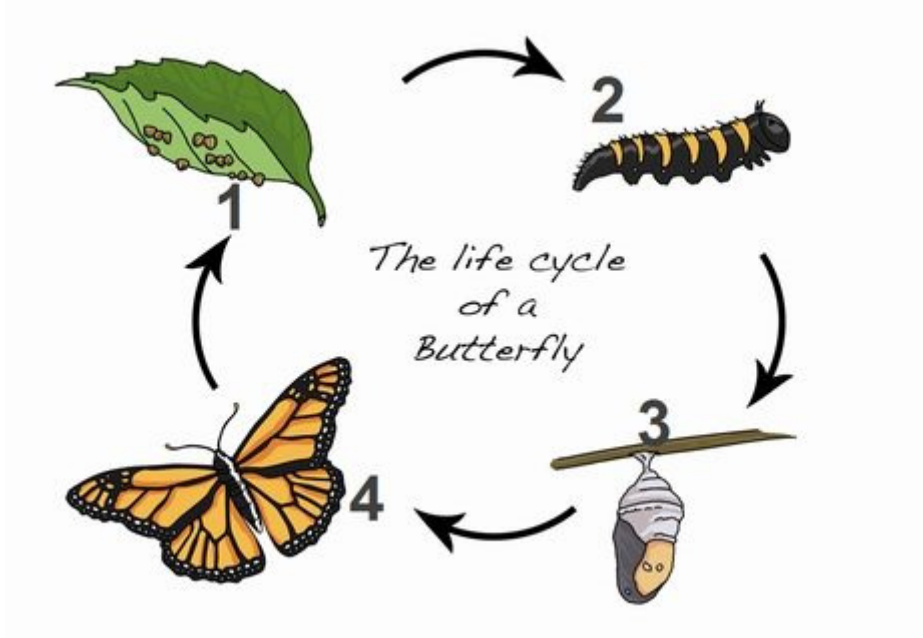


# SCIENCE: LIFE CYCLE STAGES OF ANIMALS

## 1. QUESTION

Match the number to the life cycle phrase.



### SORT ELEMENTS

- \_\_\_ eggs
- \_\_\_ butterfly
- \_\_\_ chrysalis
- \_\_\_ caterpillar

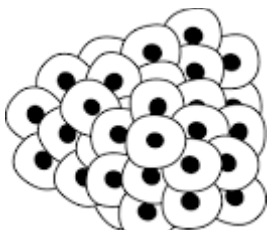
## 2. QUESTION

A caterpillar was observed forming a cocoon which eventually emerges as a butterfly. What is the name of this process?

- pollination
- renewal
- metamorphosis
- fertilization

## 3. QUESTION

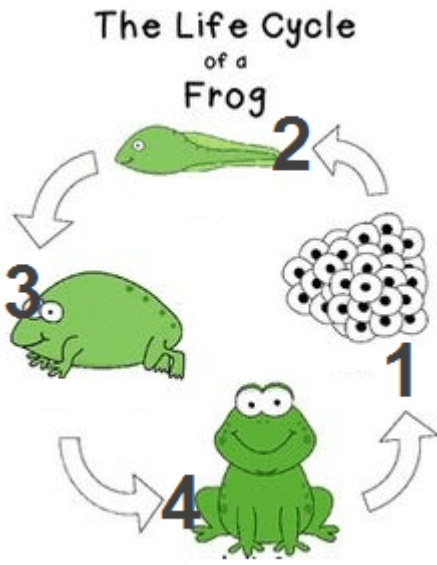
The picture below shows the eggs of a frog, covered with a jelly-like substance. What is the purpose of this substance?



- To protect the eggs from predators.
- To provide food for the developing embryo.
- To prevent eggs from drying up.
- To keep them together.

**4. QUESTION**

Label the life cycle of the frog below. Match the numbers to the stage.



**SORT ELEMENTS**

- \_\_\_ adult frog
- \_\_\_ tadpole
- \_\_\_ froglet
- \_\_\_ eggs

**5. QUESTION**

A baby frog is called a \_\_\_\_\_.

- fish
- tadpole
- froglet
- spawn

**6. QUESTION**

The mass of fertilized eggs in the jelly is known as \_\_\_\_\_.

- tadpole
- froglet
- spawn

**7. QUESTION**

A tadpole feeds on the \_\_\_\_.

- on their tails.
- yolk of the egg which it came out.
- plants and algae

Name: \_\_\_\_\_ Date: \_\_\_\_\_

**8. QUESTION**

Which is NOT TRUE concerning tadpoles?

- Tadpoles develop external gills to help them breathe under water.
- The tadpole's tails elongate.
- Tadpoles hate eating plants and algae.

**9. QUESTION**

Which of the following animals come right out the mother's body?

- whale
- frog
- penguins
- horse
- beetle

**10. QUESTION**

Which of the following don't lay eggs?

- fish
- alligator
- cow
- frog

**11. QUESTION**

Where does the mother frogs lay their many eggs?

- water
- in a nest
- on land
- on dry leaves

**12. QUESTION**

The silk covering some insects cover themselves with is called a \_\_\_\_\_.

- vertebrate
- cocoon
- crust
- shell

**13. QUESTION**

In ideal temperature of 17 ° C to 27 ° C, a fly can go through the life cycle and become an adult in \_\_\_\_\_ days.

- 14 days
- 30 days
- 7-10 days
- 15-25

Name: \_\_\_\_\_ Date \_\_\_\_\_

**14. QUESTION**

A \_\_\_\_\_ is a fertilized egg that would soon develop into an embryo.

- baby                       foetus                       zygote

**15. QUESTION**

A baby is born out of a mother's womb in \_\_\_\_\_ .

- 8 weeks               9 weeks               9 months               12 months

**16. QUESTION**

Match the following period with the age.

**SORT ELEMENTS**    - 13-19, 17 to 85, 5-12 years, 3-5 years, 20-70 years, 1-3 years

Adolescent	
primary school	
old person	
Pre-schooler	
Toddler	
adulthood	

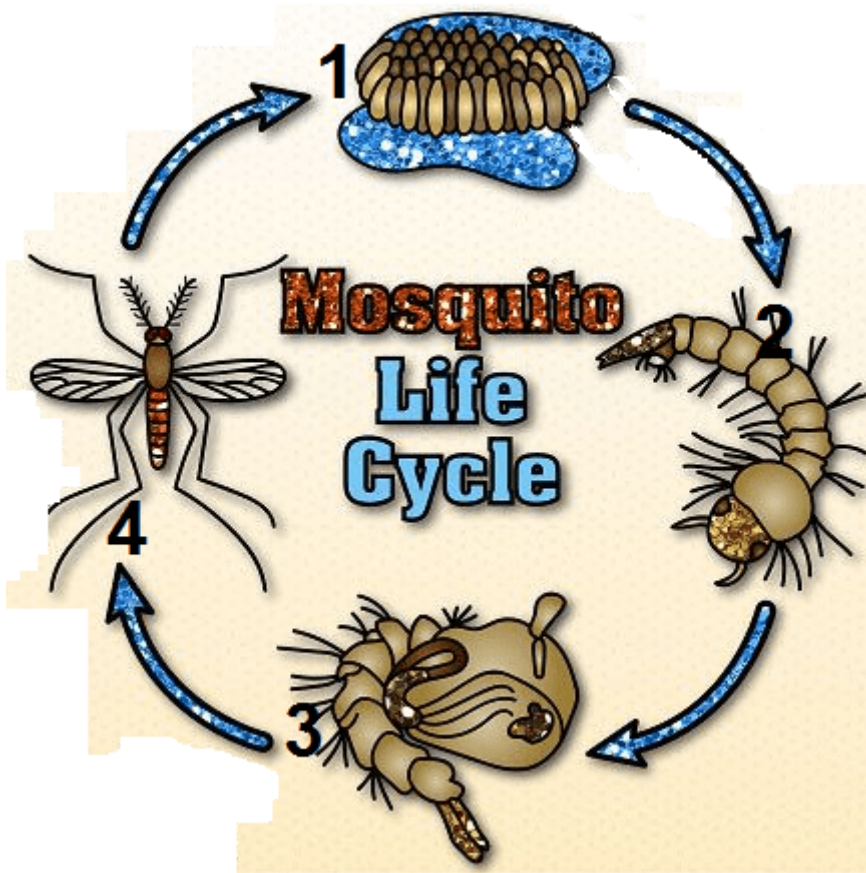
**17. QUESTION**

Which of the following animals develop gills when it is young and then develop lungs when it grows up?

- fish               frog               ducks               dogs

**18. QUESTION**

Match the number with the stage.



**SORT ELEMENTS**

- \_\_\_ adult mosquito
- \_\_\_ larva
- \_\_\_ pupa
- \_\_\_ eggs